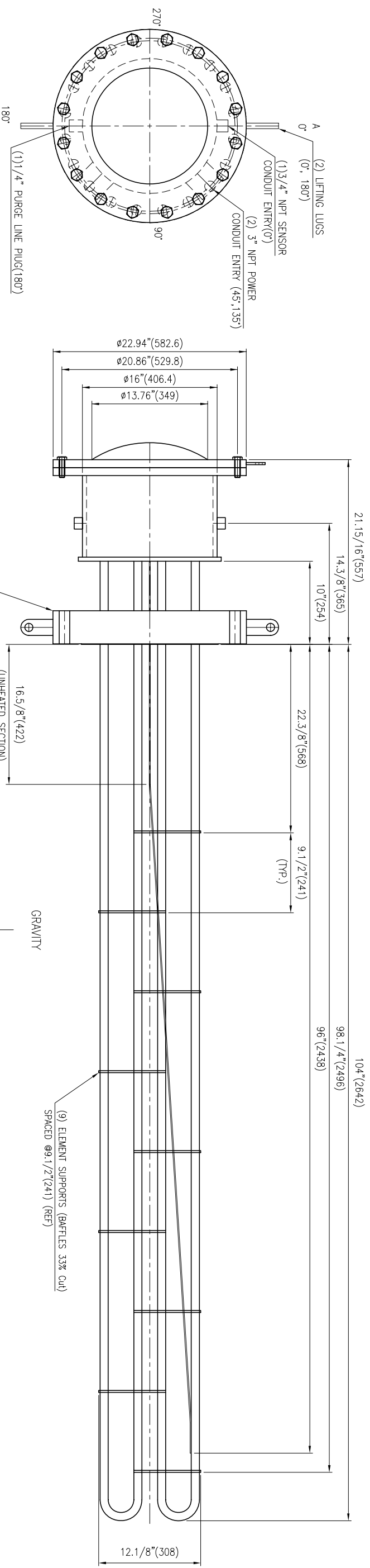
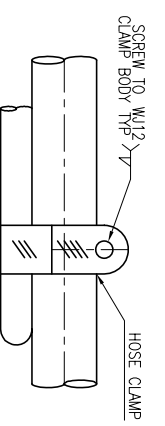
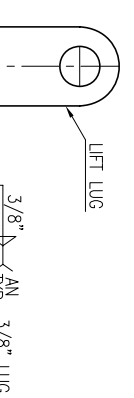


- NOTE :**
- FLANGE BOLT HOLES STRADDLE NATURAL CENTERLINES OF HEATER
 - SI/METRIC UNITS OF MEASURE ARE FOR REFERENCE ONLY.
 - CONDUIT SEALS (BY OTHERS) TO BE FIELD INSTALLED PER EN50014.
 - HEATER DESIGNED FOR HORIZONTAL INSTALLATION IN 14 NPS SCH.80 PIPE(12.5" ID)
 - HYDROTEST ENCLOSURE @246 psig (16.9 barg) for 10 seconds minimum (not exceeding 60 seconds).
 - DESIGNED FOR INLET CENTERED 16.625IN FROM FLANGE FACE @0 AND OUTLET CENTERED 104IN FROM FLANGE FACE @0.
 - ASME FLANGE CALCULATION BASED ON A SPIRAL WOUND LS GASKET WITH SA-193-B7 BOLTING.
 - CAUTION: ENSURE THAT THE LIMIT THERMOCOUPLE IS CONNECTED TO APPROPRIATE LISTED LIMIT CONTROLS.
 - CAUTION : ENSURE THAT INCOMING WIRING IS APPROPRIATELY RATED AND SIZED FOR ANTICIPATED ENCLOSURE TEMPERATURE PER LOCAL CODE. (CONDUITS SIZED PER NEC USING 200C CHARTS.)

Wattlow 2011
 Model No 701-10245
 Voltage 330 KW
 Customer P.O.: IP-201012-022
 CAUTION: READ INSTALLATION MANUAL BEFORE POWERING.
 DO NOT OPERATE WITH ENCLOSURE OPEN.
WATLOW Head Office: 43401 USA 575-251-2818



ASME INFORMATION
 CERTIFIED BY WATLOW PROCESS SYSTEMS
 SERIAL NUMBER : 701-10245
 MANIP : 435,09 PSIG @ 392 °F
 MDMT : 32F
 YEAR BUILT : 2011



PRODUCT FEATURES

IMMERSION HEATER:
 MODEL NO.: 701-10245
ELECTRICAL DATA:
 DUTY: 330 KW, 440V, 3PH
 ELECTRICAL CLASSIFICATION: CLASSIFIED ZONE 1 ATEX/IEC Ex'd GROUP IIB/H2 (3X2000)
 ELECTRICAL ENCLOSURE: EXPLOSION / MOISTURE RESISTANT
 MAX. ANTICIPATED HOUSING TEMP.: 117F (47.2 C)
 ELECTRICAL CONNECTION(S): 15 CIRCUITS MAX. WIRE SIZE : 6 AWG

PROCESS DATA:

MEDIUM: HYDROGEN-99.95%, H2O-0.04%, CO2-5ppm, O2-1ppm MEDIA STATE : GAS
 FLOW RATE: 7500 NMS/HR (1489.96 LB/HR)
 INLET TEMP.: 86F(30C)
 OUTLET TEMP.: 275F (135C)
 OPERATING PRESSURE: 20 BARG (290.08 PSIG)
 ESTIMATED SHEATH TEMP.: 396F (202.2C)
 SUGGESTED LIMIT SET TEMP.: 396F (313.3C)

DESIGN DATA:

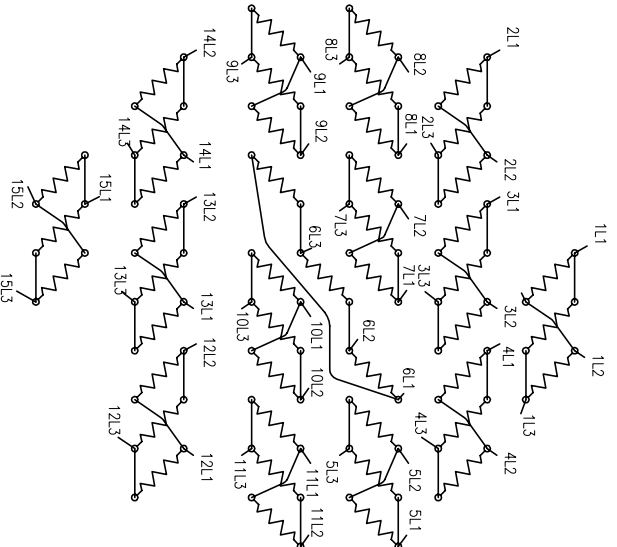
DESIGNED, MANUFACTURED & STAMPED IN ACCORDANCE WITH ASME SECTION VIII, DIV. 1, 2007 EDITION / 2009 ADDENDA
 DESIGN PRESSURE: 30.59 KG/CM2G (435.09 PSIG)
 DESIGN TEMP.: 392F (200C)
 MDMT: 32F (0C)
 HYDRO TEST PRESSURE: 566 PSIG (39.8 KG/CM2G)
 NOTE: PT
 CORROSION ALLOWANCE: 0.12" (3MM)

MATERIAL SPECIFICATIONS:

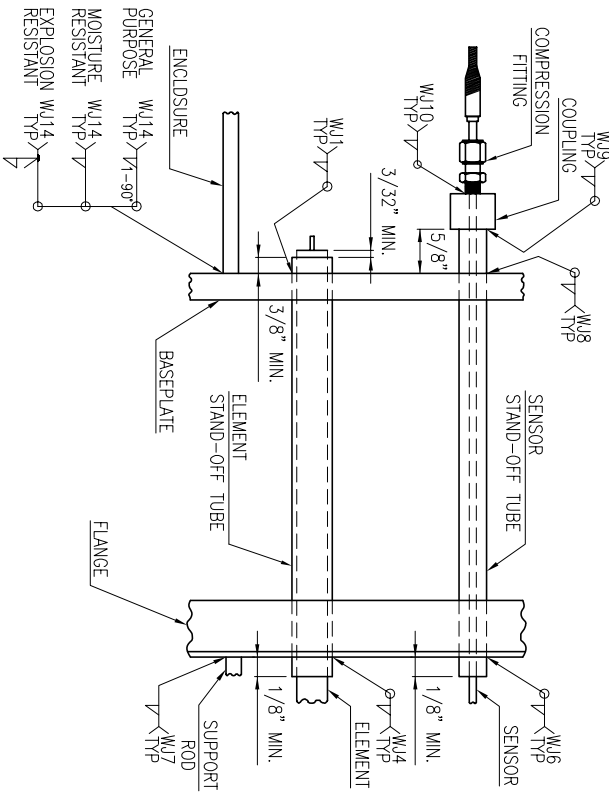
FLANGE: 14 NPS CLASS 300, RF BLIND, AS16-70 PER B16.5 EXCEPT 4 INCHES THICK
 HEATING ELEMENTS : ALLOY 800
 ELECTRICAL ENCLOSURE : CARBON STEEL (Std)
 ENCLOSURE PAINT : PRIMER ONLY (Std CS)
 FLANGE PAINT : PRIMER ONLY (Std CS)
 ELEMENT END SEAL : EPOXY(130C/266F)

HEATER SPECIFICATIONS:

QTY & SIZE OF ELEMENTS : (45) 0.43" DIA. x STD WALL
 WATT DENSITY / HEAT FLUX : 31 WPSI
 IMMERSED LENGTH (BUNDLE REMOVAL DISTANCE) : 104" (2642 MM)
 LIMIT THERMOCOUPLE : (2) ANSI TYPE "K", SINGLE UNROUNDDED
 FLANGE LIMIT SENSOR : (1) ANSI TYPE "K", SINGLE UNROUNDDED
WEIGHTS:
 ESTIMATED HEATER BUNDLE WEIGHT : 1250 LB (567 KG)



ELEMENT WIRING DIAGRAM



ELEMENT & SENSOR WELD DETAIL

FINAL

REV	DATE	BY	CHKD	APPD	DESCRIPTION
1	05.11	Y.H.	K.W.	Y.K.	FINAL
2	05.11	Y.H.	K.W.	T.K.	ISSUED FOR APPROVAL
3	02.11	Y.H.	K.W.	PARK	ISSUED FOR APPROVAL
4	12.29	Y.H.	K.W.	PARK	ISSUED FOR APPROVAL

DEOKYANG ACETILENE FACILITY PROJECT

주식회사 중원에너지
 주식회사 덕양 에너지
 DEOKYANG ENERGEN CORPORATION

WATLOW KOREA Co., Ltd.
J SYSTEM

DESIGN TEAM	PRODUCTION	SCALE	MARKS
Y.H./K.W.	10.12.29	N/A	S
Y.H./K.W.	10.12.29		REV
Y.K./PARK	10.12.29		APPD

TITLE: H2 GAS DRYER PACKAGE
 DEOXO TOWER FEED HEATER BUNDLE DETAIL DRAWING

DRWN	CHKD	APPD	SEC DMC NO.
Y.H./K.W.	Y.H./K.W.	Y.K./PARK	76861EH-102-001